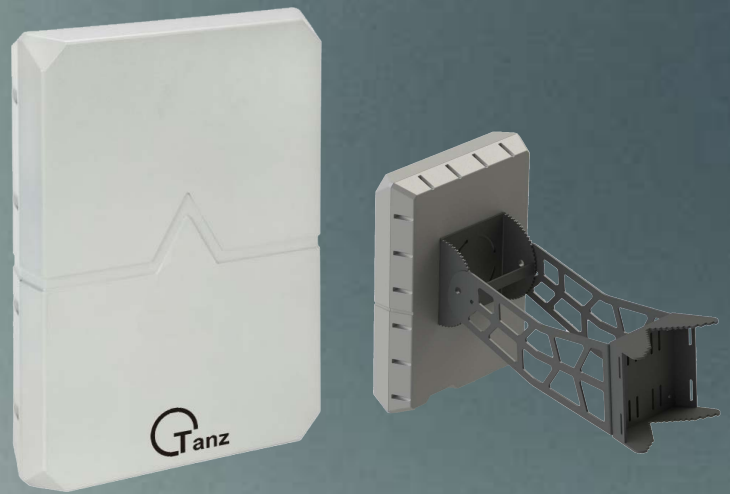


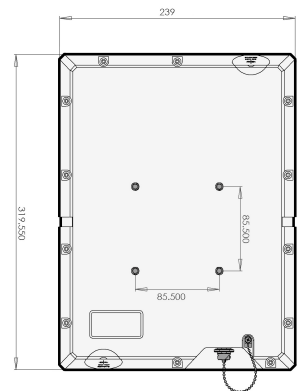
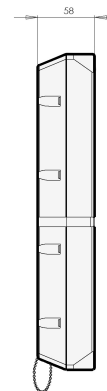
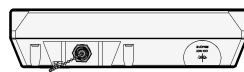
Directional radars



TAM Series

KEY FEATURES

- High performance directional radars
- C-Band MIMO type, no working license required
- Over 1000Km. detection
- Detects human, vehicles, RHIBs or boats
- ONVIF compatible
- Integrated with major VMS
- Aluminum body
- Fully networked radar
- Slew to cue for PTZ security cameras
- POE/DC power, very low consumption
- Very low throughput required
- IP67 waterproof



Specifications:

| | TAM964A-20 | TAM1000-20 |
|---------------------|---|--|
| Sensor type | High resolution MIMO digital beam-forming radar | |
| Band | C-Band | |
| Detectection range | Drone 100m., Human 400m., RHIB 600m. | Drone 250m., Human 1000m., RHIB 1400m. |
| Scan rate | 2 scan/second | |
| Azimuth coverage | 100° | |
| Elevation coverage | 30° | |
| High range accuracy | <1m. | |
| Azimuth accuracy | 1° | |
| Detection speed | 0,3-30m./Sec. | |
| Mobile application | Yes | |
| Management software | Yes | |
| Slew-to-cue | Yes | |
| Power | POE/DC | |
| Power demand | 48v./<3,5W. | 48v./<5W. |
| System interface | Ethernet | |
| Dimensions | 250mm(w) x 150mm(h) x 59mm(d) | 250mm(w) x 300mm(h) x 80mm(d) |
| Weight | 1,5Kg. | 3Kg. |
| Environmental | IP67 | |
| Accesesories | Cables, brackets, power supply | |
| MTBF | 50,000 hours | |
| Warranty | 1 year | |

* Tanz Security reserves the right to change products or specifications without notice.



Tanz Security S.L.
Gran Vía 19-21 2 planta
48001 Bilbao, Spain

Tanz Security Technology Ltd.
9F., No. 1095 Yucheng Road
Gushan Dist., Kaohsiung
80485 Taiwan

www.tanzsecurity.com
info@tanzsecurity.com
Tel: +34 944 35 98 41 (HQ)
Tel: +886 905 186 990 (Support)