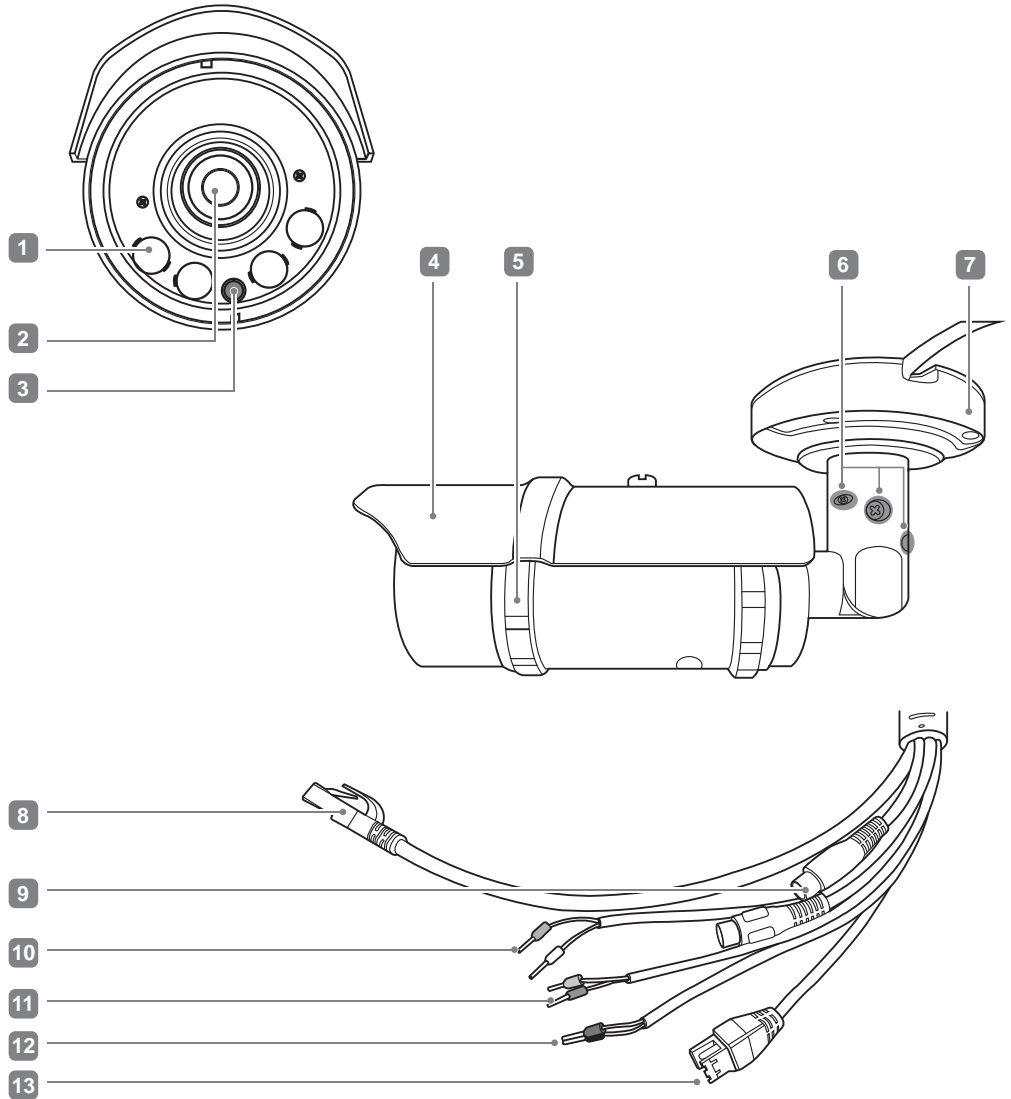


## PACKAGING CONTAINS

- 1 Network camera
- 2 CD
- 3 Power adaptor
- 4 Allen key
- 5 Anchors and screws
- 6 Drill template

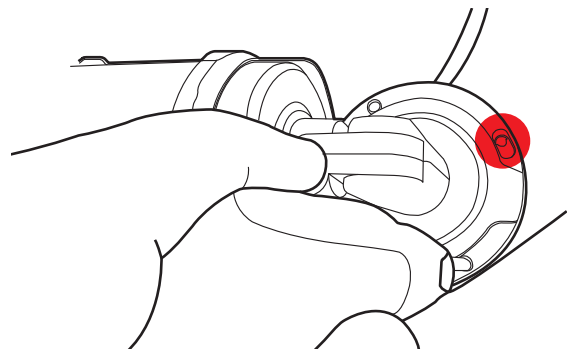
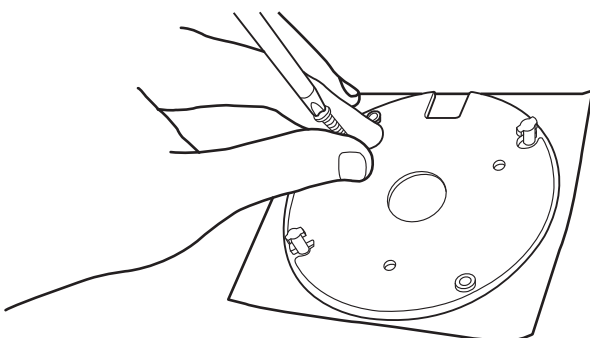
## CAMERA DESCRIPTION

- 1 IR lens
- 2 Lens
- 3 IR light sensor
- 4 Sun hood
- 5 Camera opening ring
- 6 Bracket fixing bolts
- 7 Bracket base
- 8 LAN/POE cable
- 9 Audio in (white)
- 10 Alarm out (orange-purple)
- 11 Audio out (red)
- 12 RS485 (white-yellow/green)
- 13 Alarm (red-black)
- 14 DC power



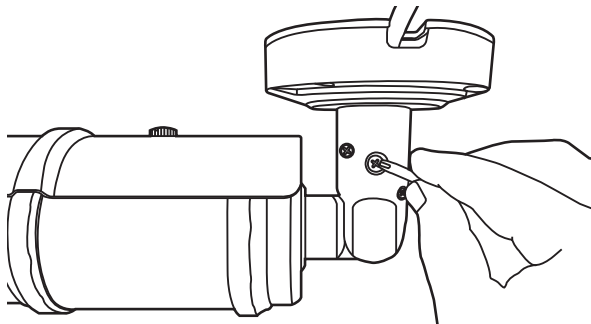
## CAMERA INSTALLATION

- 1 Locate the drill template in the area where the camera would be installed and drill the holes to screw the camera.
- 2 Once the bracket plate is fixed to the wall or the ceiling please assemble the camera to the plate, rotate the camera bracket until the lock pins are engaged. Then screw the bracket to the plate.

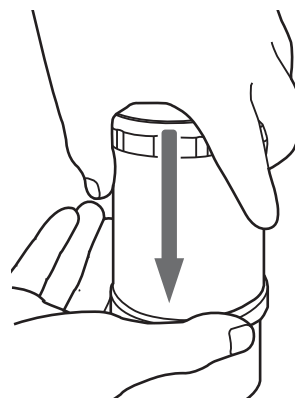


## CAMERA INSTALLATION

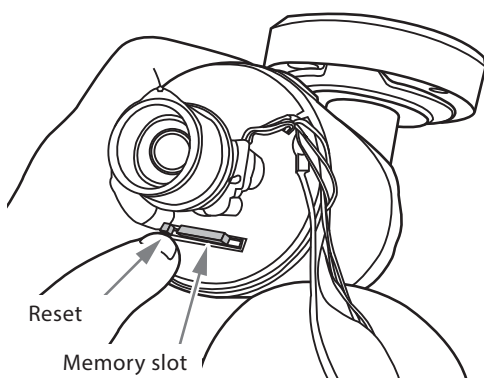
- 3** The camera view direction can be changed by releasing the bracket arm back bolts, once the camera has the right view direction tighten the bolts to fix the camera.



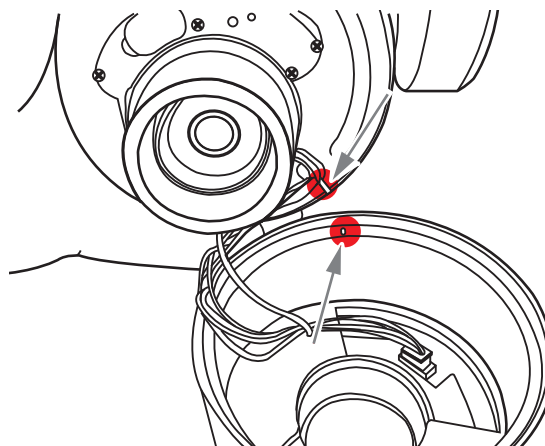
- 4** To open the camera from panel to have access to the lens focus and zoom and also to the local storage slot please remove the sun hood and by pressing the camera body down against a solid surface rotate the lock ring clockwise.



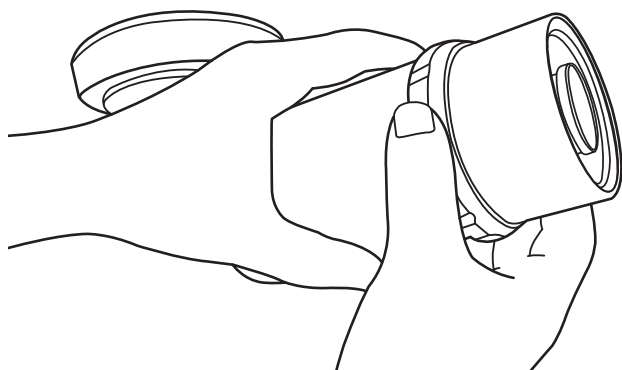
- 5** Once the camera body is opened please pull slowly the front housing part, notice this part has cables connected to the camera body. In the camera front part you would find the lens levers to adjust focus and zoom (not lever if using a remote focus lens) and also the reset button and local storage slot.



- 6** To close the camera front part please align correctly the flanges with the grooves; avoid cables to be damages while closing the camera.



- 7** Once the housing front ring has been aligned close the ring tightly to avoid water and dust get into the camera.



- 8** Once the camera is correctly installed follow the camera user manual to have access to the setting interface.