

Mobile Rugged dual sensor camera

Ganz



TCID5/ TCID6 Series

TCID5/6 series is an advanced dual-sensor security system, combining an uncooled 640×480 or 1024×768 resolution thermal sensors, several visible light imaging sensor options, and a high speed, precision pan/tilt system. Making it an extremely versatile solution for critical infrastructure protection in total darkness, bright sun, and adverse conditions.

TCID5/6 cameras are compact size rugged dual sensor cameras. Designed to work in most extreme and harsh weather, in vehicle installations, sea ports, or critical infrastructure security, such as airport security, power plants and others.

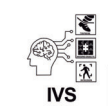
TCID5/6 cameras are designed to work in several scenarios and they are military proven. TCID5/6 dual sensor PTZ include most advanced day and night zoom cameras up to 540mm. and resolutions up to 8mp. to capture UHD video. Get best image quality 24/7.

Paired with powerful long range thermal cameras are able to detect vehicles and other threats in distances over 9Km. and they are boosted with built in video analytics and video image stabilization to perform in high security installations.

All this is integrated into a rugged IP66 housing constructed of strengthened aluminum alloy with anti-corrosive coating, this allows to withstand the harshest climates and conditions, making it ideal for mobile deployments, perimeter security, homeland defense, and coastal protection.

Key features:

- **Thermal resolution 1024x768 and 640x480 pixels, 17um. pixel pitch**
- **Day and night resolution from 2mp. to 8mp.**
- **Thermal lenses up to 100mm., autofocus**
- **Day and night 30X to 90X IR-corrected optical zoom, up to 540mm.**
- **Narrow FOV up to 0,8°**
- **Advanced super low lux Starvis back illuminated CMOS sensors**
- **Optical or digital defogging**
- **EIS video stabilization for perfect image video stability**
- **On-board video analytics**
- **High precision stepper motor technology, accurate pan/tilt 0,1°**
- **Worm drive engine, long lasting drive system**
- **24-36vDC for vehicle use**
- **IP66 waterproof and ruggedized aluminum casting housing**
- **Military connector**
- **Onvif 2.5 and Profile S**



* Wiper not available with LR lenses

* Camera lens tube may vary the diameter base in the lens selection

Specifications:

Model	TCID5/6 Series				
DAY / NIGHT CAMERA	Type	Dual sensor PTZ network camera			
	Resolution	Zoom	Focal length	HFOV	
	2 megapixel	35X	6-210mm.	61,2º-2º	
	2 megapixel	50X	6-300mm.	58,4º-1,4º	
	2 megapixel	90X	6-540mm.	59º-0,8º	
	3 megapixel	50X	6-300mm.	60º-1,8º	
	5 megapixel	30X	6-180mm.	61º-2,3º	
	8 megapixel	30X	6-180mm.	63º-2,6º	
	8 megapixel	50X	6-300mm.	59º-1,8º	
DAY / NIGHT VIDEO	Video compression	H.265/H.264 baseline, main profile, high profile, Mjpeg			
	Video streams	Multiple			
	Bitrate	1024-8,384Kbps., customizable			
	Min. illumination	Base in sensor selection			
	Day/night	Active, passive, day, night, scheduled			
	Focus type	Auto, manual, one push			
	Frames/second	30, 60fps. in optical defogging lenses			
	Shutter speed	1/30 - 1/60,000 Sec.			
	Image settings	WDR, HLC, BLC, AWB			
	Mirror	Yes			
THERMAL CAMERA	Privacy mask	4			
	Type	Uncooled Microbolometer a-Si (Amorphous silicon)			
	Resolution	640x480 / 384x288			
	Pixel pitch	17um.			
	Spectral range	8-14um.			
	Sensitivity NETD	<50mK@f/1,0 50Hz., 300K			
	Lenses	Focal length	F. number	HFOV	Focus
		50mm.	1.0	12,4º/7,47º	Autofocus
		75mm.	1.0	8,3º/4,98º	Autofocus
100mm.		1.0	6,2º/3,74º	Autofocus	
THERMAL VIDEO	Video compression	H.265/H.264 baseline, main profile, high profile, Mjpeg			
	Video streams	Multiple			
	Bitrate	1024-4,384Kbps., customizable			
	Frames/second	30			
	Color palette	10 colors			
	Focus type	Auto, manual, one push			
	Digital zoom	2X, 4X continuous			
	Video enhancement	Yes			
	Mirror	Yes			
	Privacy mask	4			
	IVS/Thermal camera	Perimeter security, line crossing			



Long range op

Long range optical zoom modules

GENERAL	Motor drive	Worm type
	Pan/tilt	Pan 360° endless, Tilt -85/90°
	Pan/tilt speed	0,1-60°/Sec. - 0,1-40°/Sec.
	Accuracy	±0.1°
	Presets	128
	Tours	4
	Auto scan	6
	Pattern	4
	Group	8
	Schedule	16
	VMS	Tanz SNVR VMS and 3rd. party compatible
	IVS Day/night camera	Tripwire, cross fence, intrusion, abandoned/missing object, fast-moving, parking detection, crowd gathering estimation, loitering, video stabilization.
	IVS thermal camera	Tripwire, cross fence, intrusion, loitering detection
	Protocols	Pelco D/P
	Alarms in/out	1/1
	RS485	Yes
	Cable connector	Military
	Power-off protection	Yes
	Network	RJ45 10/100 Mbps Ethernet
	Network protocols	IPv4/v6, RTSP/RTP/RTCP, TCP/UDP, HTTP, HTTPS, DHCP, DNS, FTP, DDNS, PPPoE, SMTP, SNMP V1/V2, IEEE802.X
	Local storage	Micro SD max. 128Gb.
	Platform	Onvif 2.5, Profile S
	Working temperature	-25°/55°C.
	Humidity	0/95% RH not condensing
	Power	24-36v.DC / <50W. / 2A.
	Electric protection	TVS 4000v.
	Waterproof	IP66
	Vibration proof	KG≥4G
	Weight	6,4Kg. approx.
	Size	370x245mm.
Certifications	CE, RoHS compliant	

Long distance, high performance thermal security

TCID5/6 Series are designed to provide maximum situational awareness and 24/7 threat assessment, user friendly accurate pan tilt zoom cameras help you protect your most valuable assets. This ruggedized system and low maintenance mid range surveillance system provides advanced features such as autofocus lenses and built in video analytics. Making TCID5/6 series and excellent security solutions for a whole range of requirements and budgets.

- **30fps high quality thermal video**
- **Super high UHD day/night video**
- **Day/night back illuminated sensors**
- **Ultra long range day/night lenses**
- **High precision pan/tilt units**
- **Built-in video analytics**
- **Built-in video stabilization**
- **Automatic alarms**
- **Optical defogging with 60fps.**
- **Multiple power options**



Visible/NIR Optical Camera

TCID5/6 Series are designed and optimized for long-range surveillance. Using large size progressive scan CMOS sensors to capture more light and perform better in low lux scenarios, able to perform perfectly under 0,001 Lux.

TCID5/6 also integrates the latest technology in real-time image processing such as BLC, HLC, WDR, EIS, 2/3DNR.

Full HD / UHD Images

TCID PTZ cameras are best in class providing high definition image in your surveillance applications, now they deliver up to 4 times higher definition than traditional HD sensor cameras. Select sensors from 2mp. to 8mp. to achieve best image quality in day or night video.

Long Range Day/Night Zoom Lenses

Select from available lens options, all Tanz Security advanced zoom lenses include several zoom motor speeds and available zoom options in 30X, 35X, 50X, 90X providing narrow FOV small as 0,8°.

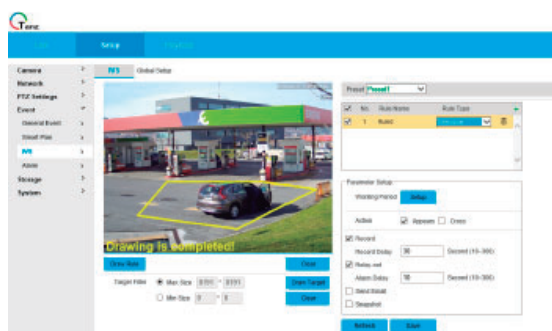
Select optical defogging or digital defogging to get rich details in long distance zoom lenses.

EIS and Video Analysis

TCID5/6 Series include advanced video analysis and digital video stabilization taking security cameras to a next level.

Tanz Security cameras are now built in advanced video analytics to make the cameras smartest than ever, set the cameras to help in different risk auto-detection:

- Tripwire
- Fence detection
- Intrusion
- Abandoned-Missing object
- Fast moving
- Parking detection
- Crowd gathering estimation
- Loitering detection.



High Performance Video Compression

TCID5/6 Series include high performance video compression to help you to decrease the storage demand, including now several encoding options in H.265, H.264, Mjpeg and Mpeg4.

Day and Night - DORI Distances

Human target 1,8x0,5m.	38% of video frame for 1080p. resolution and 300mm.	
Detection		13,750m.
Observation		5,500m.
Recognition		2,895m.
Identification		1,447m.

Thermal - DRI Distances

Human target 1,8x0,5m.	Johnson´s criteria - NATO standard - 100mm. focal length	
Detection		3,720m.
Recognition		930m.
Identification		465m.

Vehicle target 2,3x2,3m.	Johnson´s criteria - NATO standard - 100mm. focal length	
Detection		9,019m.
Recognition		2,254m.
Identification		1,127m.

* Different weather conditions and temperature changes may affect to final distances, the stated distances are references.

* Tanz Security reserves the right to change products or specifications without notice.