

Dual sensor thermal laser PTZ camera LWIR



TCID3 Multisensor PTZ Series with laser illuminator

TCID3 series PTZ is a dual sensor system able to boast 8 different HD zoom options and a high performance thermal imagers for true 24/7 performance. Integrating 3 sensors provides unparalleled performance resulting in accurate detection, recognition and identification of intruders and threats with a great situational awareness.

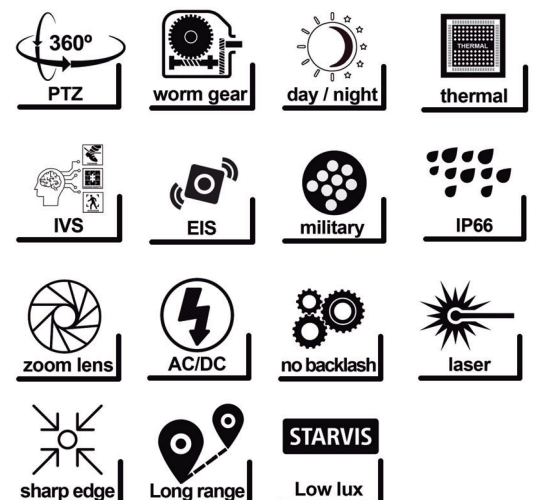
Designed for heavy duty and large lens payloads, all of this is integrated into an IP66 housing constructed of aluminum alloy with anti-corrosive salt-proof protective coating. TCID3 includes internal heater/blower, this allows TCID3 series to withstand the harshest climates and making it ideal military and cretical security applications, homeland defense, border control and coastal security.

Extreme Long Range Detection

TCID3 includes advanced Long-Wave Infrared (LWIR) sensors in 384x288, 640x480 and 1024x768 capable of detecting vehicles in over 35km. and include a long range laser illuminator or a situational awareness sensor.

Key features:

- Thermal resolution in 1024x768, 640x480 and 384x288 pixels
- High performance NETD thermal a-Si sensors with 12 μ m. pixel pitch
- Long range fixed or zoom thermal lenses, athermal or motorized focus
- Day/night camera resolutions from 2mp. to 8mp.
- 60fps. image with defogging lenses
- Up to 1200mm. focal length in day/night camera
- Ultra low light Starvis sensors for best performance in nighttime
- Optical or digital defogging
- EIS video stabilization for perfect image video stability
- On-board video analytics
- High precession stepper motor technology, accurate pan/tilt 0,01°
- Worm drive engine with long lasting - high repeatability system
- AC100-240v. + 24v.DC power
- IP66 waterproof housing
- Salt-proof coating (Marine painting)
- Heater, fan, wiper
- Military connectors
- Onvif 2.5 and Profile S

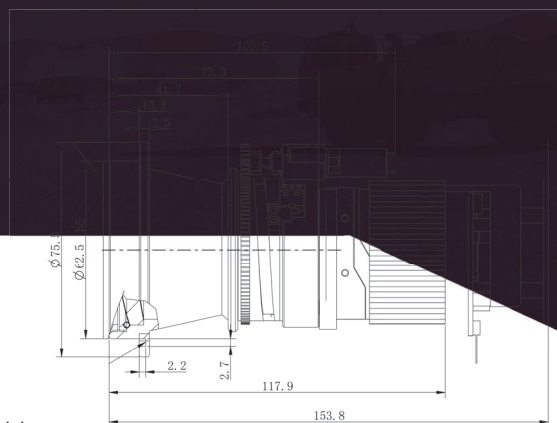


Specifications:

Model	TCID3 Series				
THERMAL CAMERA	Type	Dual sensor with laser illuminator PTZ camera			
	Sensor	LWIR, uncooled a-Si micro-bolometer			
	Wavelength	8-14μm.			
	NETD	<40mK@f/1,0 50Hz., 300K			
	Pixel pitch	12μm.			
	Resolutions	384x288 / 640x480 / 1024x768			
	Color palette	10 colors			
	Image enhancement	Yes			
	Frames/second	30fps.			
	Focal length	Available lenses from 4,8mm. to 300mm.			
	Lens types	Athermal, fixed focal length or zoom			
	Focus	Focus free or motorized			
	Video compression	H.264, MPEG4, Mjpeg			
	Streams	Triple stream			
	Bitrate	128-40,480Kbps., customizable			
	Image settings	Contrast, Brightness, Mirror, Flip, sharpness, Enhancement, 3-2NR			
	Dead pixel correction	Yes			
	Noise reduction	Yes			
	Analogue video	Optional			
	Motion detection	Yes			
	Privacy mask	Yes			
	ROI	Yes			
DAY/NIGHT CAMERA	Sensor	Low lux CMOS sensor, base in module selection			
		Resolution	Zoom	Focal length	HFOV
		2 megapixel	35X	6-210mm.	61,2°-2,0°
		2 megapixel	50X	6-300mm.	58,4°-1,4°
		2 megapixel	86X	10-860mm.	42°-0,44°
		2 megapixel	90X	6-540mm.	59°-0,8°
		2 megapixel	88X	10,5-920mm.	38°-0,4°
		2 megapixel	80X	15-1200mm.	23°-0,3°
		8 megapixel	30X	6-180mm.	63°-2,6°
		8 megapixel	50X	6-300mm.	59°-1,8°
	Video compression	H.265, H.264, Mjpeg			
	Streams	Triple stream			
	Bitrate	1024-8,384Kbps., customizable			
	Image settings	Contrast, Brightness, Mirror, Flip, sharpness, Enhancement, 3-2NR, AWB BLC, HLC, WDR			
	Day/Night	Day, night, auto			
	Frames/second	30fps., 60fps. with optical defog lenses			
	Focus type	Auto, remote motorized			
	Defogging	Optical or digital, base in selection			



Super low lux / Long range DN zoom modules



Long range thermal modules

DAY/NIGHT CAMERA	Video output	Digital, analog optional			
	EIS	In D/N cameras			
	Local storage	Up to 128Gb.			
	Web browser	IE8 or above			
LASER ILLUMINATOR	Laser light wave length	808nm. / 940nm.			
	Laser class	Class IV device			
	Illumination distances	1000m.	2000m.	3000m.	5000m.
	Zoom collimator	Yes, synchronous with the camera			
GENERAL	Pan/tilt movement	Pan 360° endless, tilt -60/30°			
	Pan/tilt speed	0,1°-60°/Sec. - 0,1°-30°/Sec.			
	Accuracy	±0,01°			
	Presets	256			
	Tours	4			
	Auto scan	8			
	Patterns	4 (10min.)			
	Groups	4			
	Schedules	16			
	Protocols	Pelco D/P			
	Digital alarms	Motion detection, temperature (in thermography models)			
	RS485/RS422	Yes			
	Connectors	Military type			
	Network	RJ45 10/100 Mbps. Ethernet, Giga Ethernet in thermography			
	Network protocols	IPv4/v6, RTSP/RTP/RTCP, TCP/UDP, HTTP, HTTPS, DHCP, DNS, FTP, DDNS, PPPoE, SMTP, SNMP V1/V2, IEEE802.X			
	Fan/Heater/Wiper	Yes			
	Platform	Onvif 2.5, Profile S			
	Environmental	-40°/65°C. - 0/90% RH not condensing			
	Gear	Worm gear, high repeatability, built-in step correction stepping motor			
	Power	220v.AC + 24v.DC / 8,8A. (Up to 200W.)			
	Electric protection	Protective circuit for surge and noise			
	Waterproof	IP66			
	Weight	23Kg. without cameras			
	Size	700x285x500mm.			
	Certifications	CE, RoHS compliant			

Total Control

Tanz Security thermal cameras let you see further than any other night vision technology. Most advanced thermal LWIR technology in 1024x768, 640x480 and 384x288 resolution paired with a wide range of lenses to provide largest detection distances to secure your installations.

Visible/NIR Optical Camera

TCID3 Series are designed and optimized for long-range surveillance. Using large size progressive scan CMOS sensors to capture more light and perform better in low lux scenarios, able to perform perfectly under 0,001 Lux. Including the latest technology in real-time image processing such as BLC, HLC, WDR, EIS, 2-3D DNR.

Long Range Zoom Lenses

Select from available lens options, all Tanz Security advanced zoom lenses include several zoom motor speeds and moving object tracking, available zoom options up to 1200mm.

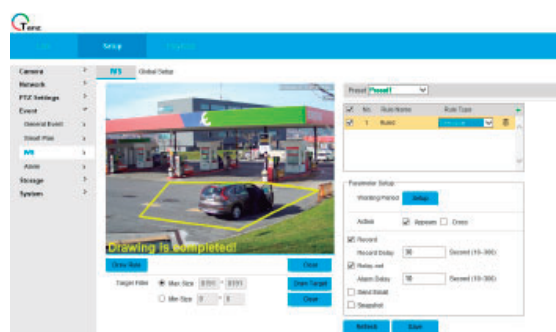
Select optical defogging providing 60fps. video or digital defogging to get rich details in long distance zoom lenses.

EIS and Video Analysis

TCID3 Series include advanced video analysis and digital video stabilization taking security cameras to a next level.

Tanz Security cameras are now including advanced video analytics to make the cameras smartest than ever, set the cameras to help in different risk auto-detection:

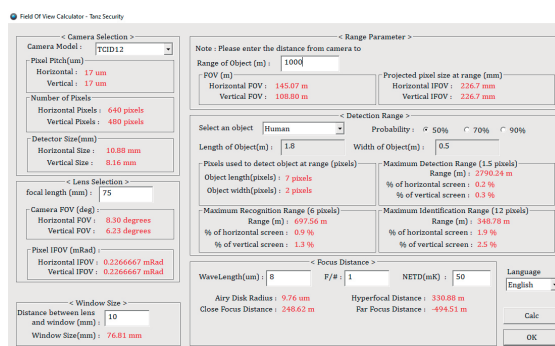
- Tripwire
- Fence detection
- Intrusion
- Abandoned-Missing object
- Fast moving
- Parking detection
- Crowd gathering estimation
- Loitering detection.



Select the right lenses for your security projects

Tanz Security provides you the perfect tool to calculate your thermal camera lenses, providing you accurate calculations base in Johnson's Criteria, so you can have in hand all important data to know what the camera will display.

- Camera HFOV and VFOV
- Pixels IFOV
- Virtual FOV at target distance
- Projected pixels at target distance
- Pixels in target at range selected
- DRI distances 50%-70%-90%



Outstanding video surveillance power - DRI

TCID3 Series long range zoom lenses are capable to monitor and control long distance objects base in Johnson's Criteria / NATO standard.

Human target 1,8x0,5m.	Johnson's criteria - NATO standard - 300mm. focal length	
Detection		15,811m.
Recognition		3,952m.
Identification		1,976m.

Vehicle target 2,3x2,3m.	Johnson's criteria - NATO standard - 300mm. focal length	
Detection		38,333m.
Recognition		9,583m.
Identification		4,791m.

* Different weather conditions and temperature changes may affect to final distances, the stated distances are references.

* Tanz Security reserves the right to change products or specifications without notice.